

# WOU Community Health + Polk County COVID-19 Project

November 2nd, 2020

## Data Brief

### County Rankings of Incidence in the Last Week

Polk: 23rd

Marion: 9th

\*Out of 36 Counties

### Cumulative Case Numbers:

Oregon: 44,923 • Polk: 690 • Marion 6,121

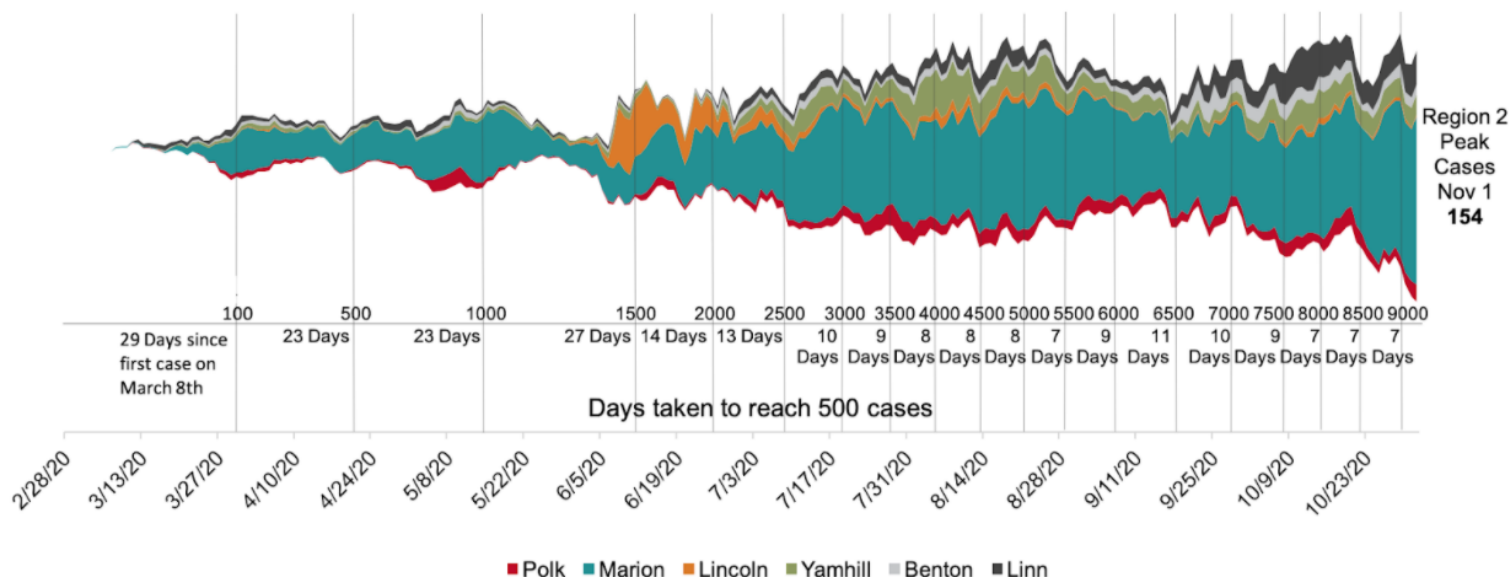
Individuals Currently Being Traced by WOU

Contact Tracing Team: **94**

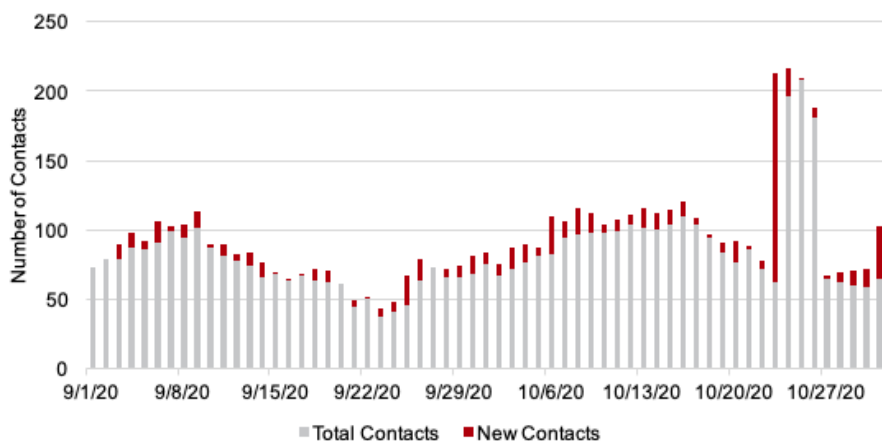
(Last Week: 209)

### Region 2 Counties Daily Cases of COVID-19, as of November 1, 2020.

Daily Cases of COVID-19 (7 Day Average)



### New and Total Contacts Monitored by WOU Contact Tracing Team: as of October 31, 2020



### New to Stream Graphs? Main Takeaways From Our New Data Visualization!

- COVID-19 cases in Region 2 increased in June, subsided a small amount in September, and have steadily increased since then.
- In mid-June, Lincoln county (orange) experienced an outbreak when more than 100 employees of Pacific Seafoods tested positive for COVID-19.
- Marion County consistently ranks highest in case numbers.

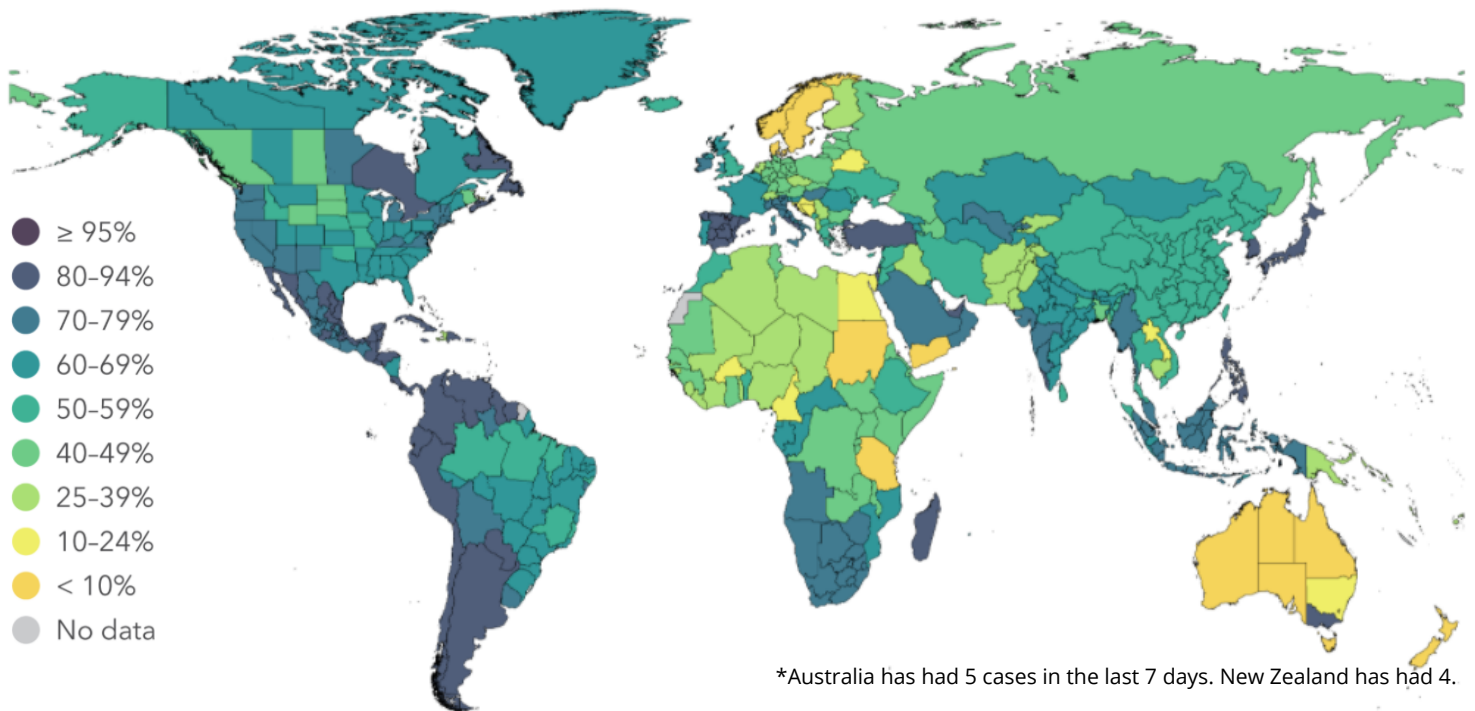
Data Brief Produced by: Maddie Dirren, Adam Chynoweth, Queenie Love Agbayani, Jenny Leon-Perez, Dr. Emily Vala-Haynes, Dr. Megan Patton-Lopez. Dr. Leanne Cusack



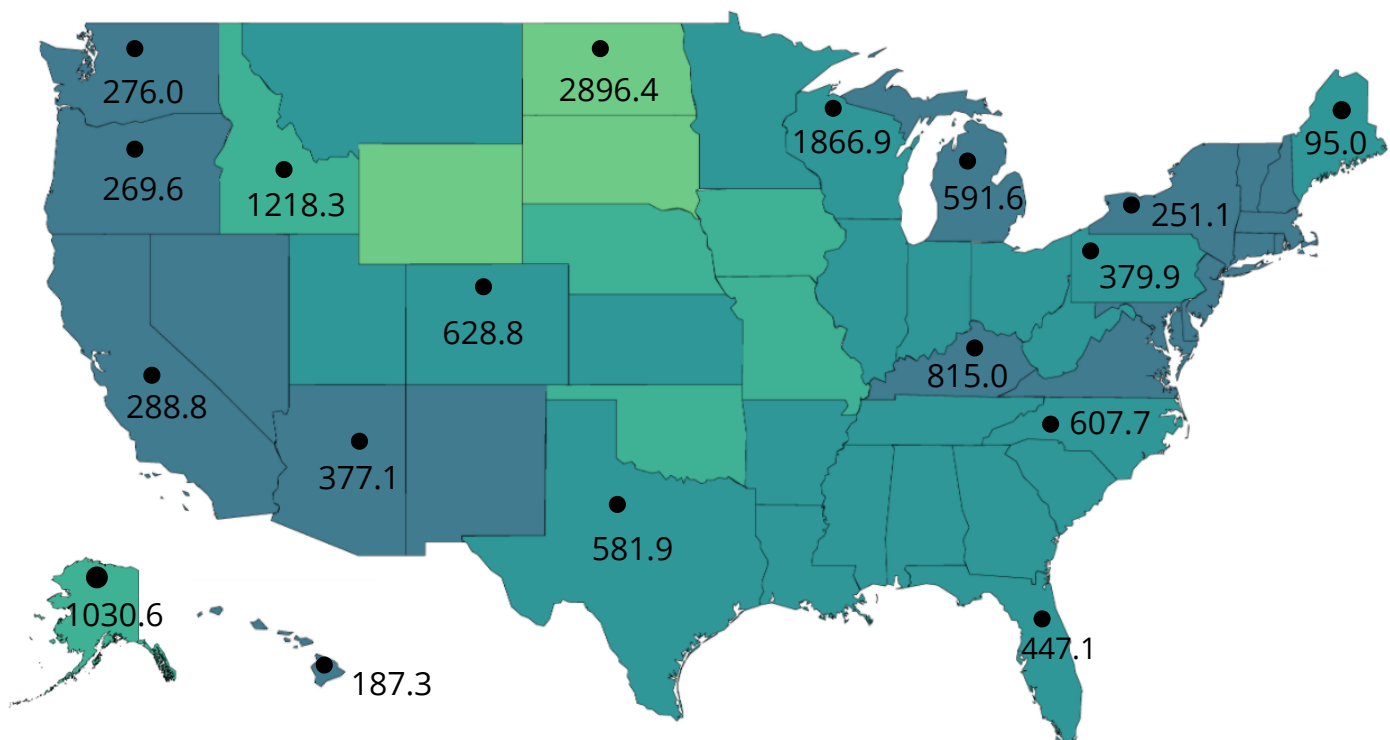
Community Health



**Percent who say they always wear a mask when going out, October**



**Mask Compliance and Selected COVID-19 Incidence\* per 100,000, October**



\*Incidence is the occurrence of new cases of disease in a population over a period of time



Community Health

