

Pre-issue No. 8

Topaz, Utah

October 17, 1942

REGISTRATION SET MONDAY FOR 2000 CITY STUDENTS

Registration next Monday of approximately 2000 elementary and secondary school students will officially launch the Topaz educational program.

Secondary school registration will continue to Friday in Dining Hall 32, from 9 AM to noon daily. The following schedule of enrollment was released this week by the Education Division: Monday, 7th and 8th grades; Tuesday, 9th; Wednesday, 10th; Thursday, 11th; and Friday, 12th.

High school classes will be conducted in Block 32. The elementary department will occupy the eastern halves of Blocks 8 and 41, the 2 centers temporarily classified as the Block 8 School and the Block 41 School.

Registration of pupils from the kindergarten to the 6th grade will be held from 9 AM to noon, Monday. Parents may accompany their school-age children to assist in the registration.

Children residing in Blocks 3, 4, 5, 6, 8, 9, 10, 11, 12, 13, 16, 22, 23, 29, 30, 36 and 37 will enroll at the Block 8 School. Those in Blocks 7, 14, 19, 20, 26, 27, 28, 31, 32, 33, 34, 35, 38, 39, 40, 41 and 42 will register at the Block 41 School.

All children who are 5 years old, or will attain that age before Oct. 31, are qualified to enter the kindergarten. Students in the other grades will be enrolled in the class to which they were promoted from their last school.

Pending the arrival of the elementary school principal, Dr. Reese Maughn, director of curriculum, will advise in that position.

Le Grande Noble is the principal of the secondary school.

308 new arrivals thursday ends tanforan — topaz trek

Amidst a crowd of 500 relieved relatives and well-wishers, 308 people, comprising the last contingent from Tanforan, arrived in the City early Thursday afternoon (1:47 PM, MWT) after a 4 days postponement.

Topaz natives, gathered at the induction center in Block 26, gave the new arrivals a warm reception and kept the safety wardens on the run trying to keep the induction process free from interruption.

But if the first day of Topaz seemed strange and exciting to the newcomers, it was nothing compared to the confusion that reigned during the last days of Tanforan. Nearly everyone who rode the last train out of Tanforan had the same story to tell. A typical explanation of what happened during that last hectic week was given by Mrs. Toki Kanazawa, 8-4-A:

"We were to leave on Friday, Oct. 9, and our freights were picked up about a week before that day and sent to Topaz. It was Tuesday morning, the week of our departure, when we got orders to throw away and burn all our furnitures and to clean the surrounding areas to our barracks.

(Over)

FIRST FIRE

Topaz's first fire, occurring early Thursday morning at unoccupied 32-11-D, periled the immediate future of the City's high school.

The fire was discovered at 4 AM Thursday morning by K. Uriu and T. Miyoshi, who were on their way to work. The two of them were able to put the fire out within 20 minutes.

After extinguishing the fire, they reported it to the Department of Internal Security, who in turn contacted the Fire Department. Samuel V. Owen, chief of the Fire Protective Division, and his assistant, William Miller, conducted an examination of the scene.

Owen estimated the damages at about \$25 and attributed the cause of the fire to a burning cigarette being thrown carelessly into the room through an open window.

The cigarette came in contact with a broom that was leaning against the north wall of the room. The broom caught on fire and before it was extinguished, the fire burned through the floor and also extended upward to the windows, breaking the panes.

The building was unoccupied, having been marked for high school use.

STUDENT RELOCATION

Departure of 6 more residents for college this week increased to 10 the number of students released to continue their education.

Ida Shimanouchi, Mills '38, and Yosh Hibino, U.C. '41, left the City Thursday at 1:30 PM for Smith College, in Massachusetts, and the University of Texas, respectively. Both will do graduate work, Miss Shimanouchi in Eng-

(Over)

lish and Hibino in commerce.

Four other students who left earlier in the week were Fred Murakami and Kazumasa Nomura, to A.M. Chesbrough Seminary, North Chili, New York; and May Yoshino and James Sugihara, to the University of Utah, Salt Lake City.

PAYCHECKS

Distribution of 2,369 Tanforan paychecks was begun Wednesday at 3 PM at Rec 26.

Of the total payroll of \$18,437.48, the smallest check went to 18-year-old Sho Nakashima, 31-9-C, who received 13¢.

Those who have not received their checks were asked to claim them at the information desk in administration building #1 by 5 PM of Tuesday, Oct. 20. After this date, a special request to the Administrative division will become necessary to secure the checks.

Those now on work furloughs will receive their money by mail, according to the Administrative Division.

RED CROSS

Ray L. Alston, state representative, and Verne B. Thorpe, general field representative, both of the Salt Lake City headquarters of the American Red Cross, met with Topaz leaders Friday to discuss activities in the city.

Though definite plans were not formulated, activities will probably include preparation for disaster, family welfare, accident prevention, home

This is the 8th pre-issue of the Topaz Times. Regular publication will begin when adequate facilities are assured.

Due to limited supplies, only one copy per each apartment is being issued; and there are no extra copies available.

nursing, first aid, sewing, message service to Japan and the formation of a Junior Red Cross Division.

WRA OFFICIAL

Dr. Robert E. Gibson, assistant regional director of education and recreation for the WRA, consulted with the educational personnel of Topaz for 9 days and left for his office in San Francisco, Thursday.

"Although present conditions appear adverse," said Dr. Gibson, "if the residents will accept such conditions as challenges to be overcome, Topaz has great possibilities of becoming a community to which the state of Utah may point with pride as a pioneering achievement."

more on last contingent

"But in the afternoon we who were living in B-7 were ordered to move to a stable with B-2 to B-6. Then rumors which were later verified had it that we won't leave for Utah at all. Most of us didn't want to stay, so we were rather confused about the whole matter until we heard the official letter Wednesday night (Oct. 7) from Center Manager Davis, saying that the Army had cancelled the train for Friday."

"From then on we heard many rumors of who and why the 8,000 people were coming to Tanforan. There were to be 'people from Hawaii or from Santa Anita, Panama, South America, Tule Lake, prisoners of war and so forth.' Did those rumors drive us nuts!

"Thursday, Friday and Saturday, we just loafed, but on the last evening we got notice stating that we were leaving for Utah next week. At 2 PM Tuesday (Oct. 13), we got another notice to be ready for embarkation by 3. We didn't leave Tanforan until 4:35 PM."

Ichiro Akiya, who achieved a local fame as the last person to be inducted in Tanforan's last contingent, reported that all 7 cars which made up the train were pullmans, "but the Army wouldn't let us make the upper berth so most of us slept on the floor during the 2 nights."

Car monitor for the train was Tad Fujita, 41-5-B.

Mari Takaha, registrar, revealed that 136 of the 308 rejoined families here. "Many of them had their places with relatives ready for them," explained Masae Morioka, housing staff member, "and the others were placed in Blocks 41 and 8."

Seven babies born in September and October arrived with their mothers. They were Tatsuko Kanazawa and baby Dennis, born Sept. 18, now living in 10-3-B; Shizue Ishida and baby girl, Sept. 19, 40-9-C; Kotoyo Otani and baby boy, Sept. 24, 39-10-D; Kisaye Fujiki and baby boy, Sept. 25, 38-8-B; Yoshiko Takahashi and baby boy, Sept. 30, 34-12-E; Miki Yamashita and baby Kazuko, Oct. 1, 13-4-CD; and Sumi Kaneko and baby Ken Allen, Oct. 1, 27-3-C.

EXHIBIT

First Art and Crafts Show in Topaz opened yesterday in Rec 7, the temporary Art School, with over 500 exhibits. It will continue today and tomorrow from 9 AM to 4 PM, with a special night show this evening from 7 to 9 PM.

The exhibit is under the supervision of Prof. Chiura Obata, art education chief.

FIFTH BABY

The fifth baby was born in Topaz this week...and still no boy.

A baby girl, Madelaine, was born to Mrs. Flora Nobori at 7:35 AM, Wednesday.

WORKERS WANTED

EDUCATION: Residents interested in obtaining positions as teachers or cadet teachers in senior and junior high schools were asked to report to Principal L. G. Noble in Block 32 at once.

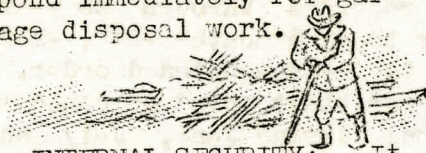
Individuals with A.B. degree or its equivalent may be assigned positions at professional rating; those with 3 years of college work may be assigned as cadet teachers at skilled rating. Individuals in either of these groups may receive college credit toward a teaching credential if they so desire.

Applications for the above positions must be in by Oct. 25. Immediate appointments to specific positions will be made upon a satisfactory interview, it was said.



MAINTENANCE: Paul H. Baker, chief of Maintenance, this week again called attention to the fact that a considerable number of men are leaving his department to go on furlough work, leaving the department short of workers; and that this shortage was primarily responsible for delays in the various undertakings of the department.

Baker said that the shortage was especially acute in the garbage disposal section, and that: "Not only for efficiency and consistency of service, but for the health and sanitation of the residents, more men should respond immediately for garbage disposal work."



INTERNAL SECURITY: It was announced today that the Division of Internal Security has openings for men between 21 and 35 years of age as wardens. The force has so far been limited to 100 men to permit late arrivals to enlist.

TOPAZ CHURCHES

TIMES

October 17, 1942

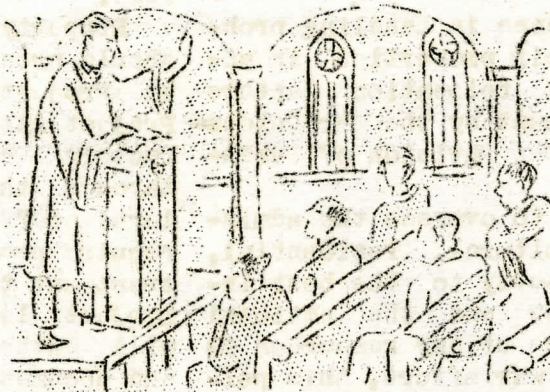
Page 3

Building arrangements for all faiths represented were made at the weekly meeting of the Inter-Faith Ministerial Association in Rec 5 on Oct. 7.

The buildings, which were assigned as semi-permanent locations, were as follows: Protestant, Rec 22; Buddhist, Rec 28; Catholic, Seventh Day Adventist, Rec 14; and religious center, Rec 33.

The following were assigned for Sunday use: Protestant, Recs 27, 22 and 5; Buddhist, Recs 28 and 35.

The assembly approved and recommended that Father



Stoecke be granted access to the City to serve the Catholic Congregation.

George Aso was selected to serve in a liaison capacity between the Association and the Community Welfare Division.

The Reverends J. Tsukamoto and

K. Kumata were named as observers to sit in with the City Advisory Council.

The following church schedules were released at this time:

PROTESTANT CHURCH AT RECS 27, 22 and 5.

(English-speaking) **Sunday:** Sunday School at Rec 27 from 9:30 AM with Hiro Katayama as chairman and Rev. John Yamashita as speaker; Sunday School at Rec 22 from 9:30 AM with Henry Kobayashi as chairman and Rev. J. Tsukamoto as speaker; communion service at Rec 22 from 10:30 AM with Rev. George Aki as chairman and Rev. S. Shimada as speaker; fellowship at Rec 27 from 7 PM with Rev. Taro Goto as speaker and Henry Tani as chairman.

(Japanese-speaking) **Sunday:** morning worship service at Rec 5 from 10 AM with Rev. J. Fujii as chairman and Rev. I. Tanaka as speaker; evening service at Rec 22 from 7 PM with Rev. S. Shimada as chairman and Rev. Z. Hirota as speaker; evening service at Rec 5 from 7 PM with Rev. M. Nishimura as chairman.

Wednesday: evening service at Rec 5 from 7 PM with Rev. J. Fujii as chairman and exhortations by Mrs. Fujita and K. Tanaka.

BUDDHIST CHURCH AT RECS 28 and 35.

Sunday: Sunday School at Rec 28 from 9 AM with Sumiko Kido as chairman and Rev. K. Kumata as speaker; young people's service at Rec 35 from 10 AM with Tad Hirota as chairman and Rev. T. Kashima as speaker; adult service at Rec 28 from 10 AM with T. Kosakura as chairman and Rev. S. Sanada as speaker.

CATHOLIC CHURCH AT REC 14.

Sunday: service at Rec 14 from 7:30 AM, confessions conducted by Father Stoecke; and at 8 AM, mass, also conducted by Father Stoecke.

Wednesday: evening service at Rec 14 from 7 PM, conducted by Father Stoecke.

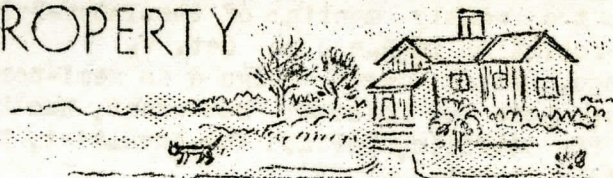
SEVENTH DAY ADVENTIST AT REC 14.

Saturday: Sabbath School at Rec 14 from 9 AM with Mrs. Tsujimura and George Aso as chairmen; worship service at Rec 14 at 10 AM with K. Uchida as chairman and George Aso as speaker.

ACKNOWLEDGMENT

For sympathy extended in their bereavement, Takeo Akagi and his family express their gratitude to friends of the late Mrs. Koto Akagi.

PROPERTY



PROPERTY PROBLEMS: The following information on evacuees' property problems has been released for publication by the WRA:

Adequate assistance in handling problems concerning their properties is assured residents of relocation centers with the establishment by the War Relocation Authority of the Division of Evacuee Property.

Its function is to oversee the administration of agricultural, residential, and commercial property to the best interests of evacuees and the national welfare. Since waste of any resources is detrimental to the war effort, this policy will insure the maximum utilization of these properties with full and proper regard for the rights of evacuees.

This does not mean that the Government will do the work of private agencies where satisfactory channels for the handling of properties already exist. The function of the Division is rather to help owners with problems which have arisen subsequent to their evacuation and which they cannot solve personally or through their authorized agents. Every effort will be made to provide a just administration of property and no evacuee should expect that WRA, because of its Federal status, will exert any influence in his behalf that is not in accordance with sound business principles. In other words, the solution of property management problems will be based on fair treatment for all parties to any transaction.

Primarily the Evacuee Property Division will act in the capacity of adviser or negotiator. Where necessary, then, an evacuee may enlist the assistance of WRA to:

Secure tenants or operators for both agricultural and commercial properties.

Negotiate new leases or renewal of existing leases.

Obtain buyers for real or personal property of all kinds.

Effect settlement of claims for or against an evacuee.

Adjust differences arising out of inequitable, hastily made or indefinite agreements.

Obtain an accounting for amounts due, and facilitate collection thereof.

Ascertain whether property is being satisfactorily maintained or whether damage or waste is occurring.

Check inventories of goods and equipment, and recommend utilization of material for the best interests of the evacuee and the nation.

Field offices have been set up in three locations to expedite business

transactions. The Seattle office will handle cases involving property located in Oregon, Washington, Idaho and Montana; the San Francisco office will care for California north of Tehachapi, Nevada and Utah; and the Los Angeles office will serve California south of Tehachapi and Arizona. Supervisors experienced in property management will head each office.

Property owners needing assistance should present their problems first to the Project Legal Aid Department or the Project Attorney. In many cases satisfactory settlement can be arranged through the facilities of the project legal staff. Where problems arise that require property inspection or some other treatment that cannot be handled by the project legal staff, the legal staff will gather all pertinent information and documents for forwarding to the proper field office. This procedure will insure a quicker service than if the evacuee contacted the Division of Evacuee Property directly, since the project staff is in a better position to assemble the necessary facts to permit the property supervisors to act without delay.



SNOWFALL: Tabulations of the weather station at Desert, located 16 miles south of Topaz, indicate that snowfall may possibly begin next month in this region. On the average of 40 years, November snowfall is 2.4 inches. For December, the average is 5.3 inches; and January, 5.1 inches. The heaviest snowfall may be expected in February, when the mean of 7 inches has been recorded.

The snow season may run through March (4.9"), April (2.7") and possibly until May (.1").

Climatic summary of 34 years predict very little rain, the average precipitation for the entire year being only 8.16 inches.

The coldest months of the year are December, January, and February. Average temperatures during these months are, respectively, 25.7°, 25.5°, and 31.9°. The lowest recorded through 35 years have been for these 3 months -27°, -23°, and -28°, in the aforementioned order.

The strongest "heat wave" is scheduled to hit Topaz during June, July and August, when the average maximum temperatures are 83.6°, 91.1° and 89.2°.

WELFARE

SELECTIVE SERVICE: The Community Welfare Division this week suggested that nisei notify their draft boards of their change of address; and that issei report their new address to the Department of Justice.

Community Welfare also announced that the signature of the postman in Delta is necessary for notarization of the selective service questionnaires. Arrangement for transportation may be made through the Welfare Division, at Rec Hall 30.

COLLEGE CATALOGUES: The student relocation section of Community Welfare requested that former college students with college catalogues bring them to Rec Hall 30, where they will be used for reference.

RECREATION



BY TAD HIROTA

COMMUNITY ACTIVITIES SECTION

REC HALLS: To provide for leisure-time needs and interests of the people of this City, the Community Activities Section has already opened up 5 recreation centers, and 3 more will be ready for public use next week. These centers are placed in central spots throughout the City and are manned by playground supervisors with experience in recreational work.

The 5 halls now operating are those in blocks 6, 20, 23, 34 and 37. Daily except Sundays, they're open from 9 AM to 8:30 PM, with time off for lunch and supper hours. The residents, especially the boys and girls, are urged to take advantage of the facilities and leadership being provided.

All the equipment being used now was donated by the Tanforan recreation program, through the efforts of H. Leroy Thompson, who directed the program. The WRA has not included recreation (specifically) in its budget, and as a result the residents must realize that their support will be essential in carrying on a complete community recreation program.

COMMUNITY CONVENIENCE: Originally, this department had 36 halls under its jurisdiction for recreational purposes. However, with the many problems of community importance that have come up, the Community Activities staff has worked for the immediate interests and convenience of the people here and have allocated the use of a majority of its buildings to other groups.

For your guidance, 8 halls are being used as recreation centers; 4 for pre-school nurseries; 4 for different church groups; 3 for adult education; 2 each for Community Enterprises, library and public schools; and 1 each for Community Welfare, Community Government, Office of Safety Wardens, art school, housing and placement, sugar beet employment, recreation headquarters, religious center, and administration recreation center. Two halls are still being used by the construction company.

THIS AND THAT: With winter rapidly approaching, plans are being drawn up by Moto Takahashi of the landscape architects division for a huge outdoor ice skating rink, to be located in the recreation area in the southern part of this City. Residents interested in this sport will be asked to work voluntarily on this project very soon.

The art department of this section has to date produced over 500 signs and posters for the various divisions. The staff is headed by Kim Oyata and is 10 in number. The work is being done in Rec 10 at present.

Boys are requested to refrain from playing regular tackle-football, as no equipment is available at present, and too many injuries are liable to occur. A touch-tackle league will be formed next week on a center-wide basis; sign up at your rec centers if you are interested in participating.

POST OFFICE



SALES: William Willoughby, clerk in charge of the Topaz Post Office, revealed today that between Oct. 1 and Oct. 13 the Post Office sold \$4353 worth of money orders and \$505 worth of postages.

The largest amount of money orders sold in a day was \$353, on Tuesday, Oct. 6. Postage sales mounted to \$70 on Saturday, Oct. 10 and on Monday, Oct. 12.

MAIL HOURS: According to Hideo Iyeki, Supervisor of resident workers, incoming mail reaches Topaz once daily between 10:30 and 11:30 AM (from Delta). Outgoing mail leaves the City on weekdays at 4:30 PM and at noon on Saturday.

The outgoing mail is taken up at the Post Office at 4:30 PM on weekdays and at 11:30 AM Saturdays. Letters mailed at the canteen are collected at 3 PM on weekdays, 11 AM Saturdays. Letters left with block managers are deposited at the canteen.

Unless the mail is particularly heavy, it is delivered once daily. Due to limited facilities, residents are requested to call for their packages for the time being. Within a week, the PO hopes to secure a truck to deliver packages in the afternoons.

OFFICE HOURS: The Post Office is open from 8 AM to 5 PM daily except Saturdays (8 AM to noon) and Sundays (closed). Stamps, envelopes and cards are sold during these hours; while registered mail, money orders, COD packages, parcel post and insured packages are handled between 11 AM and 4:30 PM.

COOPERATION: Willoughby and Iyeki requested the cooperation of the residents in setting up an efficient mail-service. Of immediate note, they requested that residents report all changes of address at once.

"JANKE"

BY BENNIE NOBORI

TOPAZ TIMES

October 17, 1942

